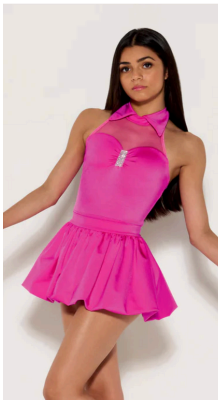




Inferno Competition Packing List

- Ember Team Jacket
- Neoprene Turners (Jazz, Lyrical, Contemporary)
- Black High Tops (Hip Hop)
- Blue Dress (Lyrical)
- Pink Leotard (Jazz)
- Pink Skirt (Jazz)
- Black Unitard with Blue Leg Stripes (Contemporary)
- Black Blazer with Blue Lapelles (Contemporary)
- Necklace (Contemporary)
- Red Jersey (Hip Hop)
- Black Shorts With Red Stripe (Hip Hop)
- (Recommended): "Butt Glue for leotard bottoms



Additional Items For Showcase & Recital

- Blue Team Leotard
- White Ballet Skirt (wrap around)
- Ballet Pink Tights
- Ballet Shoes
- Black Pants/Leggings (May Recital Only)
-
-
-



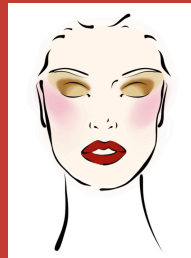
Inferno Competition Packing List

Hairstyle

Center part, low ponytail with straightened hair, slicked back very well- no flyaways! Braided hair covering elastic.

- Brush
- Comb
- Spray bottle with water
- Ponytail Holders
- Clear Elastics
- Bobby Pins
- Gel
- Strong-Hold Hairspray

Makeup



- Foundation- Liquid under, powder on top
- Blush- ELF Camo Liquid Blush "Pinky Promise"
- Eyeshadow- ELF No Budge Shadow Stick "Perfect Pearl"
- Eyeshadow- ELF No Budge Shadow Stick "Magnetic Pull"
- Eyeliner- your choice
- False Eyelashes- Ardell 3D Faux Mink
- Eyelash Glue
- Lipstick- Maybelline